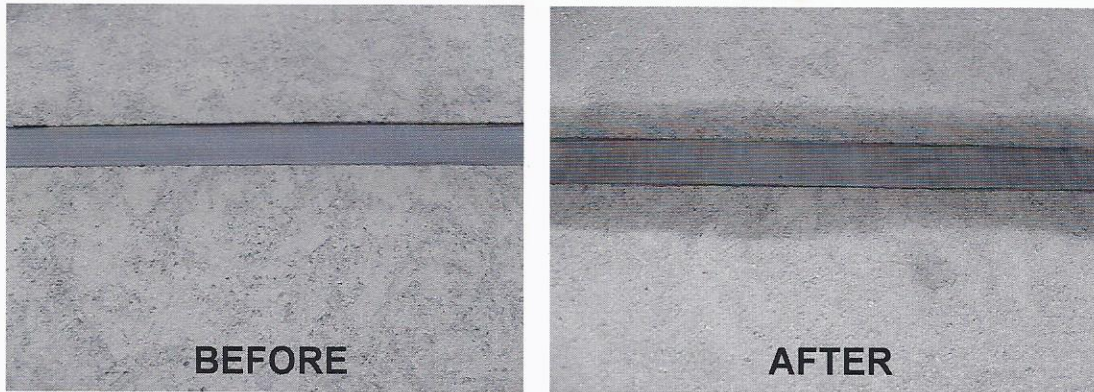


19. We are now an approved company under the ISO 9001 Scheme and hope to obtain our ISO 14001 and 18001 within a couple of months.

21. We have developed some expertise in the use of poultices (latex, lime and mortar based) to remove ingrained stains in masonry including metal stains from memorials, biological stains from plant climbers and sealant oils from cladding panels.



See point 15

22. We regularly use a range of mortars including Ordinary Portland Cement, white cement, hydrated and hydraulic lime. We also have access to sourcing a wide range of sands for colour variations to suit clients' tastes.

23. Some years ago, we discovered a special alkaline Stainless-Steel cleaner from Denmark to use on stainless cladding.

24. We have a lot of experience with crack stabilisation using stainless steel helicals as well as stainless steel threaded dowels used with masons' epoxy. We have also used specialist epoxy repairs on cracked concrete floors.

25. In 2016 we further developed our concrete skills by successfully removing a redundant paint finish from several thousand square feet of concrete flooring at a Retail Centre in York. For most of the work we used special floor planers and scabblers.

26. WE REGULARLY REPAIR SMALL AREAS OF CONCRETE (<2 SQ. METRES) USING A VARIETY OF PROPRIETARY REPAIR KITS E.G. FOSROC

27. Over the last decade we have developed in-house skills to both polish glass (after the occasional acid over-spray) as well as polishing of both granite and marble sufficiently to be able to correct aged staining.